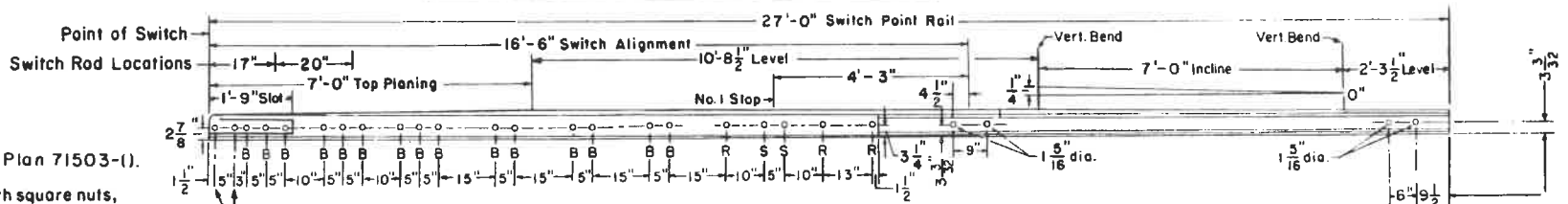


**RIGHT HAND SWITCH LAYOUT**



**ELEVATION OF SWITCH RAIL**

**NOTES**

Side Planing = 7'-10 1/4"

All switch bolts per Conrail Plan 71503-().

"B" = 1" dia. H.T. machine bolts with square nuts, spring washers, 1/4" cotter pins. Hex nuts at rocker clips.

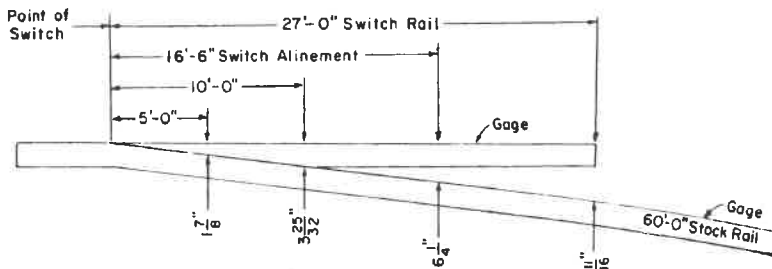
"R" = 3/4" dia. rivets.

"S" = 3/4" dia. machine bolts for stops with square nuts, spring washers and 3/16" cotter pins.

Leave these holes opened for C.B.S. Dept.  
1 1/16" Dia.

Indicates Field Weld

12 - All bolts shall be dipped immediately before applying (so that all threads are thoroughly coated) in NO-OX-ID "GG" grease manufactured by Dearborn Chemical Co.



**SWITCH OFFSETS**

\* 11" for No. 8 Turnout

- 1 - This plan is for use with A.R.E.A. recommended standards for 132 R.E. / 136 R.E.
- 2 - Workmanship and materials shall be as per current A.R.E.A. Specifications.
- 3 - Gage Plate 1-G as shown on Conrail Plan 73522-().
- 4 - Switch Plates Nos. 0, 1, 1A, IP, HP shown on Conrail Plan 73522-().
- 5 - Turnout Plates No. 2 thru No. 11 as shown on Conrail Plan 72222-().
- 6 - Stock Rails to be undercut as per Conrail Plan 73062-().
- 7 - Switch Rails to be undercut per A.R.E.A. Design 5100.
- 8 - All rails to be Fully Heat Treated
- 9 - Vertical insulated switch rods and adjustable rocker clips as per Conrail Plan 73518-().
- 10 - All rails, including switch rails, to be drilled per Conrail Plan 71015-() or Plan 71016-(), except that first hole is not to be drilled by the manufacturer.

11 - See Conrail Plan 73184-(), sheet 2, for Bill of Material

Tie layout for No. 10 Turnout see Conrail Plan 73185-().

For placing of special plates 10-2 thru 10-11 see Plan 72222-().

**TRANSIT** 73181-M  
RAIL OPERATIONS S1001  
STANDARD

**16' 6" STRAIGHT SPLIT SWITCH  
27' SWITCH RAILS WITH FLOATING HEELS  
#10 WELDED TURNOUT**

JANUARY, 1999

*R. J. Young*  
Chief Engineer - Trk