

**NOTES**

- 1-ALL RAILS TO BE FULLY HEAT TREATED OR HEAD HARDENED INCLUDING BONDED JOINT RAILS, FROG WING AND HEEL RAILS, SWITCH AND STOCK RAILS.
- 2-SWITCH RAILS TO BE UNDERCUT.
- 3-60'-0" STOCK RAILS ARE TO BE UNDERCUT PER PLAN 73062-(-).
- 4-GAGE PLATE NO.1-G PER PLAN 73522-(-).
- 5-SWITCH PLATE NOS.0,1A,HP,1,1-P PER PLAN 73522-(-).
- 6-TURNOUT PLATES NO.2 THRU NO.11 PER PLAN 72222-(-).
- 7-VERTICAL INSULATED SWITCH RODS AND ROCKER CLIPS PER PLAN 73518-(-).
- 8-FLOATING HEEL BLOCK PER PLAN 73180-(-).
- 9-FOR SWITCH DETAILS SEE PLAN 73181-(-).
- 10-ALL RAILS, INCLUDING SWITCH RAILS, ARE TO BE DRILLED PER PLAN 71016-(-), EXCEPT THAT THE FIRST HOLE IS NOT TO BE DRILLED BY MANUFACTURER, THE FIRST HOLE WILL BE DRILLED IN THE FIELD WHERE NECESSARY.
- 11-BONDED INSULATED JOINT FURNISHED WITH TURNOUT AND MANUFACTURED BY APPROVED VENDOR.
- 12-SWIVEL SHOULDER FROG TIE PLATES PER PLAN 72223-(-).
- 13-ON NON-INSULATED TURNOUTS T.O. AND CLOSURE RAILS ARE TO BE CONTINUOUS, NO JOINT.
- 14-SEE PLAN 73184-(-), SHEET 2 FOR BILL OF MATERIAL.

**LEGEND**

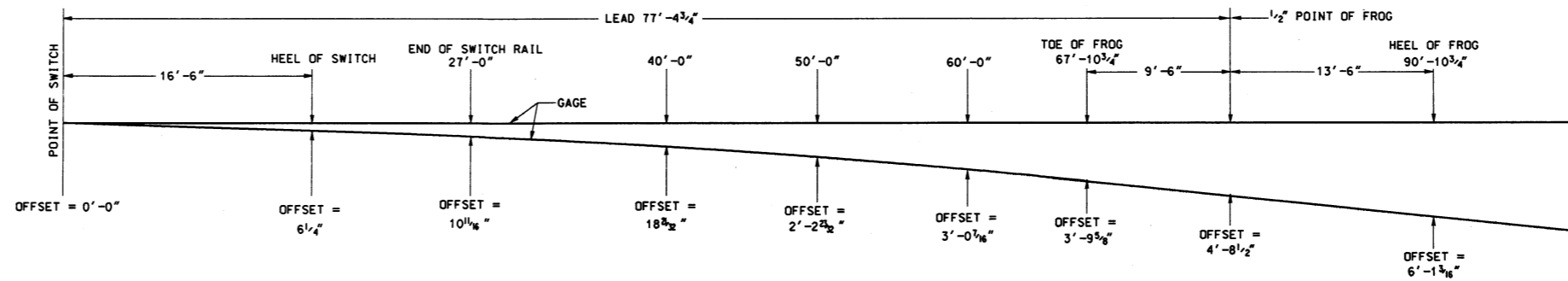
- RAIL FURNISHED BY MANUFACTURER
- - - RAIL FURNISHED BY CONRAIL
- ⊕ FIELD WELD JOINTS (0" OPENING)  
RAIL TO BE CUT IN FIELD FOR WELDING  
(TOLERANCE +1/8", -0")  
(RAIL DRILLING: 9 1/2"-6", 1 3/8" DIA.  
HOLES, 3 3/32" AB)
- ⊕ BONDED INSULATED JOINT (3/16" OPENING)  
(RAIL DRILLING: 3 1/2"-6"-6", 1 3/8" DIA.  
HOLES, 3 3/32" AB)

**TIMBERS SHIPPED WITH TURNOUT**

QUANTITY	LENGTH
15	9'-0"
11	10'-0"
8	11'-0"
5	12'-0"
9	13'-0"
6	14'-0"
6	15'-0"
7	16'-0"
67	TOTAL

**SWIVEL SHOULDER FROG TIE PLATES REQUIRED**

- 16-P27 PLATES
  - 10-P31 PLATES
  - 4-PR27 PLATES
  - 4-PR31 PLATES
- PLAN 72223-(-)



**OFFSETS FOR NO. 10 RH TURNOUT**

**ALL PANDROL TURNOUT**

**N TRANSIT**  
RAIL OPERATIONS  
STANDARD

**73185-M**  
**S1005**

**#10 WELDED TURNOUT TIE AND RAIL LAYOUT**

JANUARY, 1999

*R. J. Young*  
Chief Engineer - Tracks